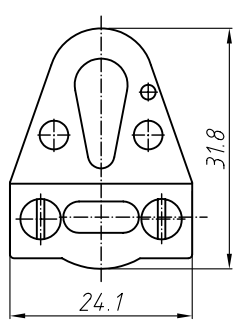
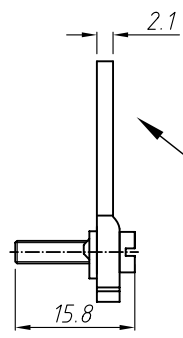


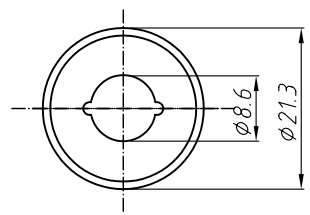
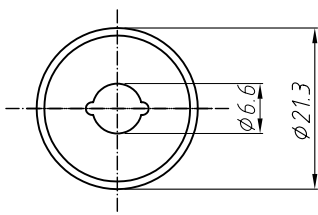
canopy (cone)  
ser. no. 029.005.300



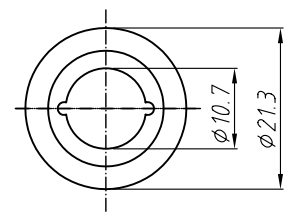
cylindric cap for canopy cone  
for 1 till 2 cable  $\varnothing 1.5$  mm  
and power-feed cable  $\varnothing 6 - 6.6$  mm  
ser. no. 029.005.208



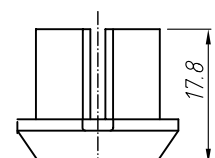
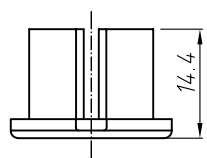
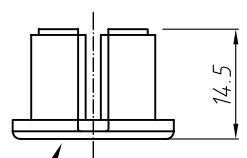
strain-relief  
power. feed cable  
ser.no.: 029.005.862



cylindric cap for canopy cone  
for 1 or 2 cable  $\varnothing 1.5$  mm  
and power-feed cable  $\varnothing 8 - 8.6$  mm  
ser. no. 029.005.210



cylindric cap for canopy cone  
for 1 or 2 cable  $\varnothing 1.5$  mm  
and power-feed cable  $\varnothing 10 - 10.7$  mm  
ser.no. 029.005.212



type of packing:  
1 set per PE-bag  
ser.no. 000.002.000

				Scale: 1:1	Size: A4	Tolerance: DIN/ISO 2768 c	
				Mass: 47,9g	AG:	Material: various	
				MC:		Surface: various	
			Date	Name	Designation		
			Work	27.11.03	S.Lorey	canopy (cone) with 3 adapter for 1 or 2 cable $\varnothing 1,5$ mm; and power-feed cable from $\varnothing 6$ to 10,7 mm; white RAL 9010	
			Change				
			Release:				
			 <b>REUTLINGER</b> <sup>®</sup> Frankfurt am Main - Germany			Drawing No.	Sheet 1 1Sh.
						Drawing No. K - 193.005.723 - 0 - GB Ser. No.	
Status	Change	Date	Name	Caution Copyright DIN 34		Replc.f.:	Replcd.