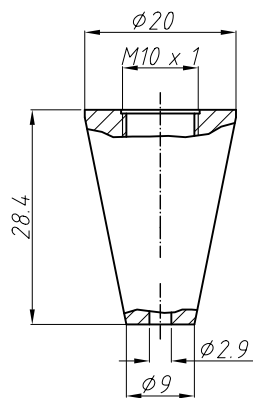


ceiling plate ϕ 20 - M10x1 - M6i
ser. no. 029.006.025



cap for tension jack cone
ser. no. 029.006.050

type of packing:
cable rolled
parts not assembled
without instructions
PE-bag ser.no. 000.002.001

Scale: 1:1	Size: A4	Tolerance: DIN/ISO 2768 c
Mass:	AG:	Material: brass
MC:		Surface: nickel plated

Status	Change	Date	Name	Date	Name	Designation	Drawing No.	Sheet
				16.01.06	0.Ziegenhain	Ceiling attachment >Cone<	K - 193.005.442 - 0 - GB Ser. No. _____	1
								7 Sh.
				Release:				
				REUTLINGER® Frankfurt am Main - Germany		Replc.f.: _____		
						Replcd. _____		
				Caution Copyright DIN 34				