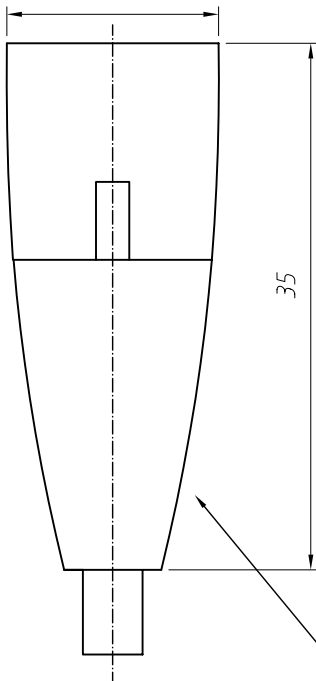
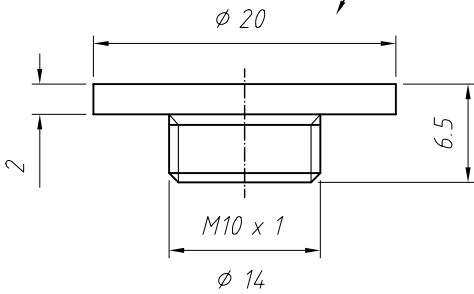
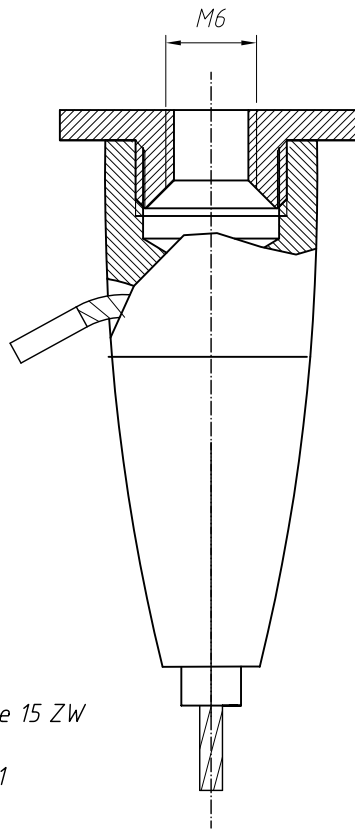


ceiling plate  $\phi 20 - M10 \times 1 - M6i$   
ser. no. 029.006.025



ceiling coupler type 15 ZW  
ellipse M10i x 1  
ser. no. 193.002.201



cable  
 $\phi = 1,5 \text{ mm}$

type of packing:  
50 pieces  
PE-bag ser.no. 000.002.001



Thread tolerance	Customer
Nut	6H
Bolt	6g

Scale: 2:1	Size: A4	Tolerance: DIN/ISO 2768 c
Mass: 30,5g	AG:	Material: various
MC:		Surface: various

Status	Change	Date	Name
		08.04.04	S. Lorey
	Change		

Designation	combination - ceiling coupler type 15 ZW ellipse M10i x 1 with ceiling plate M10 x 1 - M6i	
Release:		
Drawing No.	K - 193.000.839 - 0 - GB	Sheet 1
	Ser. No. _____	1 Sh.
Repl.c.f.:		Repl.cd.

**REUTLINGER**  
Frankfurt am Main - Germany

Caution Copyright DIN 34

19.02.2007 12:40:35